

infralogix®

Industrial Reliability Solutions

Industrial operations share a common set of needs that infralogix is uniquely positioned to deliver:

- Improve Operating Performance, OEE
- Avoid Unplanned Downtime
- Reduce Operating Costs
- Extend Unit Life
- Maximize ROIC
- Minimize Safety Risks



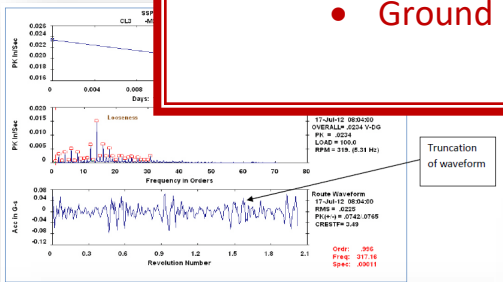
Predictive Maintenance & Testing Services

Our broad experience and integrated service offering enables us to provide system-wide solutions, a valuable alternative to typical services that are limited to only component-level applications.

- Infrared Inspections
- Ultrasonic Testing
- Vibration Analysis
- Oil & Lubrication Analysis
- Ground Resistance Testing

Critical Assets and Systems

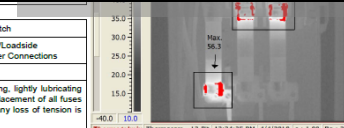
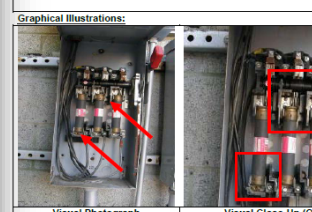
- Transformers
- Electrical Switchgear & Distribution
- High Voltage Switchgear
- Compressed Air
- Boilers and Steam Systems
- Motors and Gearboxes
- Machine Wear
- Pumps
- Valves
- Hydraulic Systems



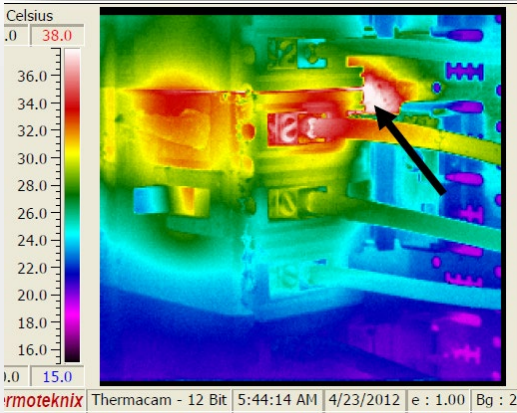
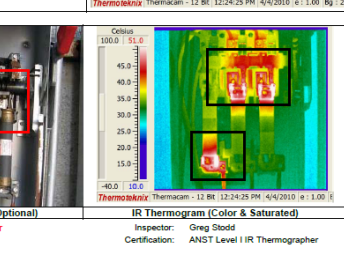
**Electrical IR T
Diagnosis**

General Equipment Description:		General Plant / Process	
Date	Time		
4/5/2010	2:33 PM	Maintenance Shop A	
Equip. ID & Designation:		Bu	
Disconnect 105			

Fault Location & Corrective Information:		
Amb. Temp.:	27.1°C	Component Involved:
Delta T (Rise):	34.1°C	Location of Fault:
		A, B & CØ Line/Loadside Fuse/Fuseholder Connections
Recommendations for Corrective Maintenance Action:		
Recommend a general PM of entire Fuseblock, which consist of cleaning, lightly lubricating and tightening of all fuseholder components. In addition, suggest the replacement of all fuses and checking all fuseholders to insure proper spring pressure exists. If any loss of tension is detected, fuseholder replacement is highly recommended.		



Report Page No. 4
Work Order#:10-1488
Repair Priority: Immediate Repair



www.infralogix.com
757-229-2965